



Benchmarking Lounge de Ambiente sobre Cidades Sustentáveis

Cidades Sustentáveis

Eng. João Farinha

FCT/UNL

jrf@fct.unl.pt

<http://cidadessustentaveis.dcea.fct.unl.pt>



<http://cidadessustentaveis.dcea.fct.unl.pt>

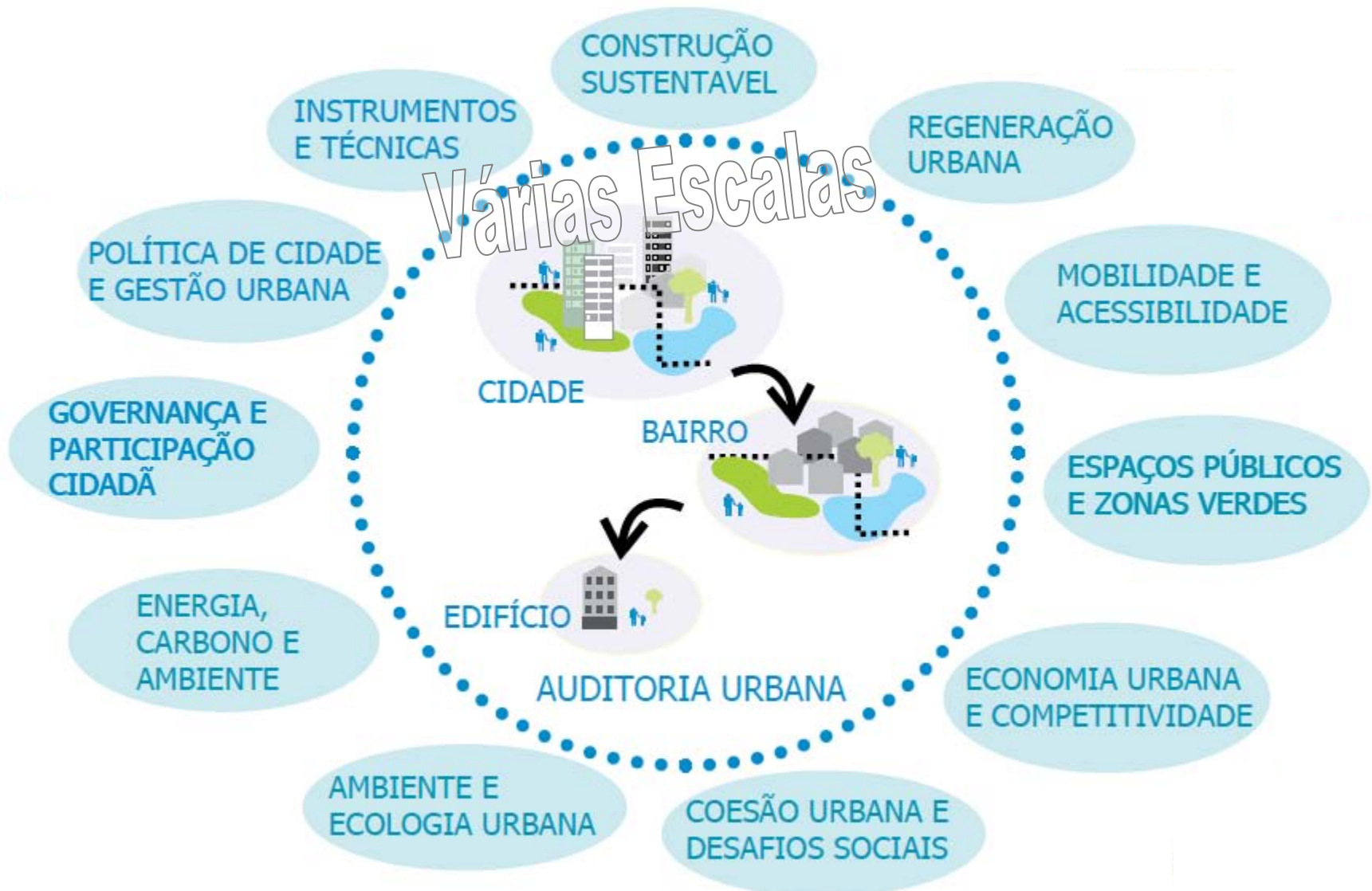
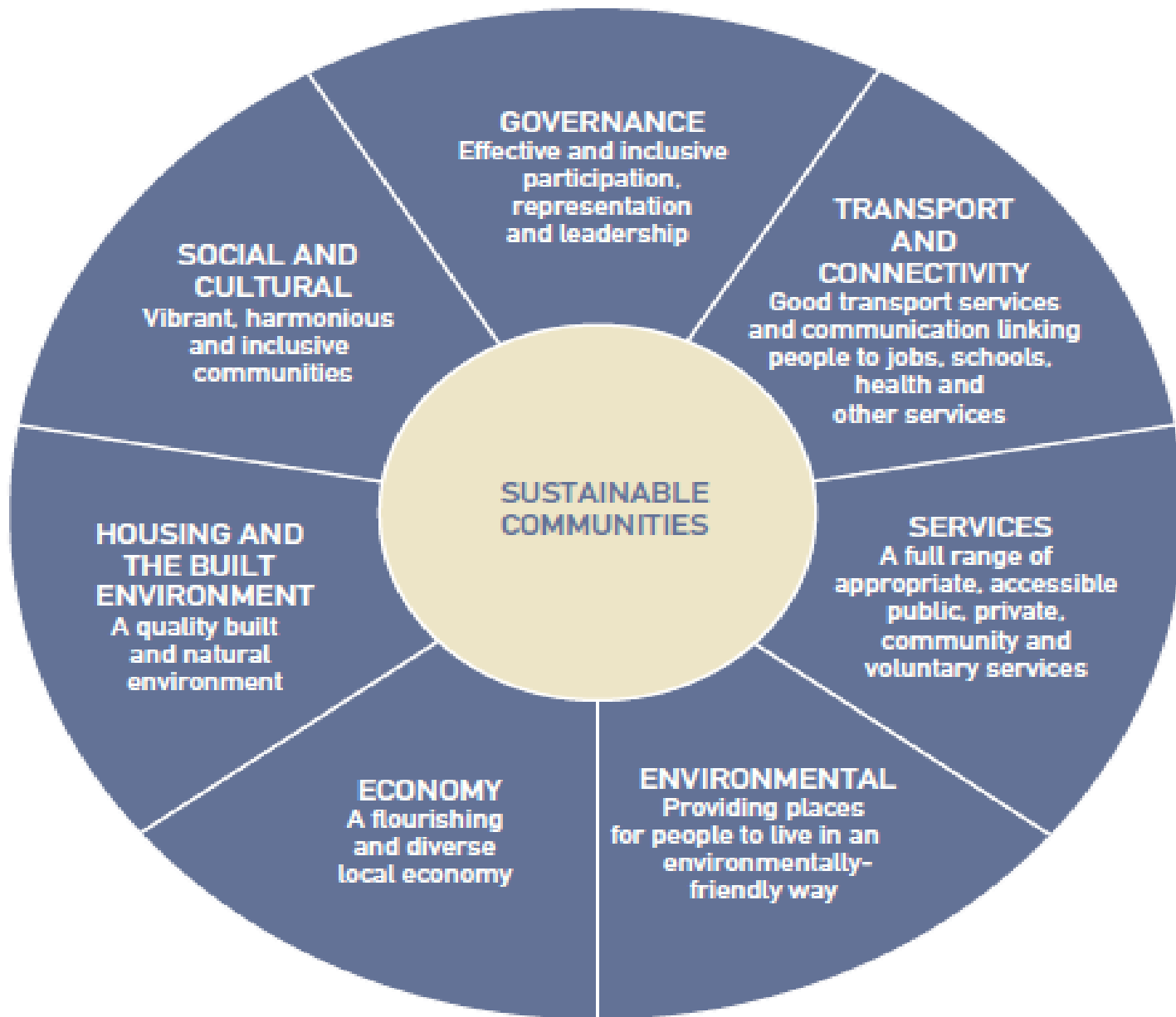


DIAGRAM ONE: COMPONENTS OF SUSTAINABLE COMMUNITIES



BOX ONE: COMPONENTS AND SUB-COMPONENTS OF SUSTAINABLE COMMUNITIES

A COMMON SUB-COMPONENT across all components is:

- All provision and/or activity to be high quality, well-designed and maintained, safe, accessible, adaptable, environmentally and cost-effectively provided
-

SOCIAL AND CULTURAL – Vibrant, harmonious and inclusive communities

- A sense of community identity and belonging
 - Tolerance, respect and engagement with people from different cultures, background and beliefs
 - Friendly, co-operative and helpful behaviour in neighbourhoods
 - Opportunities for cultural, leisure, community, sport and other activities
 - Low levels of crime and anti-social behaviour with visible, effective and community-friendly policing
 - All people are socially included and have similar life opportunities
-

GOVERNANCE – Effective and inclusive participation, representation and leadership

- Strategic, visionary, representative, accountable governance systems that enable inclusive, active and effective participation by individuals and organisations
 - Strong, informed and effective leadership and partnerships that lead by example (eg government, business, community)
 - Strong, inclusive, community and voluntary sector (eg resident's associations, neighbourhood watch)
 - A sense of civic values, responsibility and pride
 - Continuous improvement through effective delivery, monitoring and feedback at all levels
-

ENVIRONMENTAL – Providing places for people to live in an environmentally-friendly way

- Efficient use of resources now and in the future in the built environment and service provision (eg energy efficiency, land, water resources, flood defence, waste minimisation etc)
- Living in a way that minimises the negative environmental impact and enhances the positive impact (eg recycling, walking, cycling)
- Protecting and improving natural resources and biodiversity (eg air quality, noise, water quality)
- Having due regard for the needs of future generations in current decisions and actions

HOUSING AND THE BUILT ENVIRONMENT – A quality built and natural environment

- **Creating a sense of place (eg a place with a positive 'feeling' for people, and local distinctiveness)**
 - **Well-maintained, local, user-friendly public and green spaces with facilities for everyone including children and older people**
 - **Sufficient range, diversity and affordability of housing within a balanced housing market**
 - **A high quality, well-designed built environment of appropriate size, scale, density, design and layout that complements the distinctive local character of the community**
 - **High quality, mixed-use, durable, flexible and adaptable buildings**
-

TRANSPORT AND CONNECTIVITY – Good transport services and communication linking people to jobs, schools, health and other services

- **Transport facilities, including public transport, that help people travel within and between communities**
 - **Facilities to encourage safe local walking and cycling**
 - **Accessible and appropriate local parking facilities**
 - **Widely available and effective telecommunications and Internet access**
-

ECONOMY – A flourishing and diverse local economy

- **A wide range of jobs and training opportunities**
 - **Sufficient land and buildings to support economic prosperity and change**
 - **Dynamic job and business creation**
 - **A strong business community with links into the wider economy**
-

SERVICES – A full range of appropriate, accessible public, private, community and voluntary services

- **Well-educated people from well-performing local schools, further and higher education and training for lifelong learning**
- **High quality, local health care and social services**
- **Provision of range of accessible, affordable public, community, voluntary and private services (eg retail, food, commercial, utilities)**
- **Service providers who think and act long term and beyond their own immediate geographical and interest boundaries**

Hamburg HafenCity Project

